

MONTHLY MEMBERSHIP PROGRESS REPORT

District 201Q2

Results as of: 3/31/2024

GMT:

LOCATION AUSTRALIA

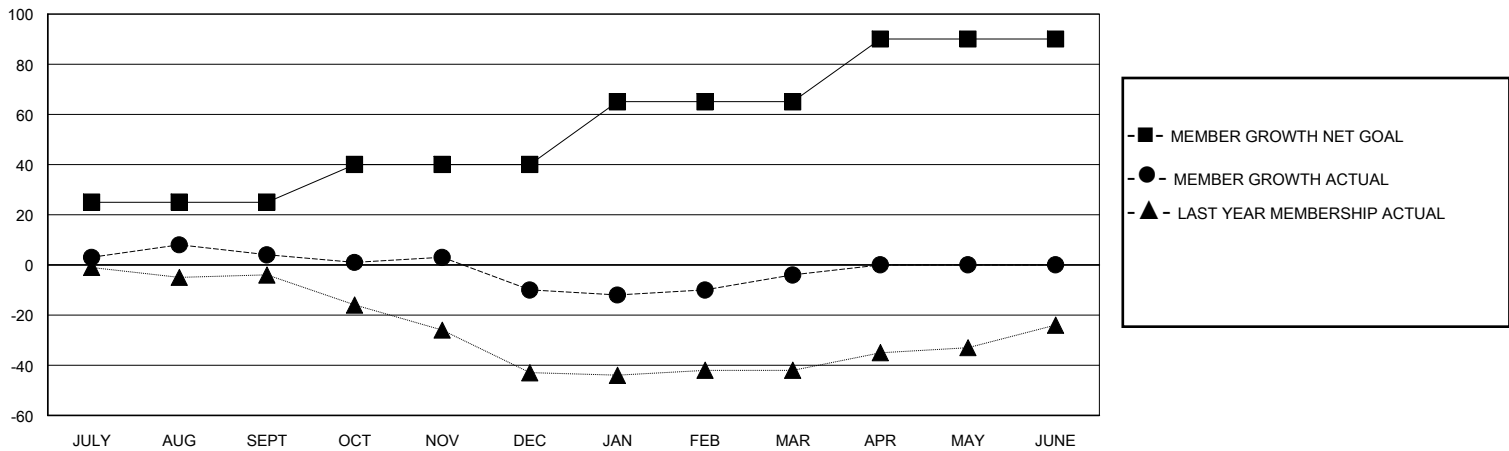
GMT CA

Clubs				Members			
RESULTS FOR 2023-2024				RESULTS FOR 2023-2024			
QUARTER	NEW CLUB GOAL	NEW CLUBS	DROPPED CLUBS	QUARTER	MEMBER GROWTH NET GOAL	MEMBER GROWTH ACTUAL	DROPPED MEMBERS ACTUAL (including transfers)
JULY/AUG/SEPT	0	0	0	JULY/AUG/SEPT	25	39	34
OCT/NOV/DEC	0	0	0	OCT/NOV/DEC	15	18	30
JAN/FEB/MAR	1	0	0	JAN/FEB/MAR	25	40	30
APR/MAY/JUNE	0	0	0	APR/MAY/JUNE	25	0	0

GOALS AND ACTUAL NEW CLUBS CUMULATIVE



GOALS AND ACTUAL MEMBERS CUMULATIVE



DROPPED CLUBS: 0	33 CLUBS OF 62 ADDED 1 OR MORE NEW MEMBERS	<u>GENDER DISTRIBUTION</u>	
		MALE	531 (52.68%)
		FEMALE	477 (47.32%)
<u>DROPPED MEMBERS</u>		TOTAL FAMILY UNIT MEMBERS 181	
DECEASED	11	FAMILY MEMBERS PAYING HALF DUES 92	
CLUB CANCELLED	0		
OTHER	83		
TOTAL	94		

[CLICK HERE FOR CUMULATIVE MEMBERSHIP DATA](#)